



2026

# Apparel Catalog

Men | Women | Kids & Youth | Headwear

# 2026 Apparel Catalog

---

## Men's Clothing

T-Shirts	4-8
Tank Tops	9-10
Long Sleeve Shirts	11-12
Sweatshirts	13-14
Hoodies	15-16
Embroidered Polos	17-18

## Women's Clothing

T-Shirts	19-21
Tank Tops	22-23
Long Sleeve Shirts	24-25
Embroidered Polos	26-27

# 2026 Apparel Catalog

---

**Kids & Youth Clothing**

**28-30**

**Embroidered Headwear**

**31-33**

A man with a beard and sunglasses is wearing a red t-shirt. The t-shirt has a graphic design with four horizontal white brushstroke-like bands containing the city names 'London', 'Sidney', 'Paris', and 'New York' in a red script font. Below these bands, the words 'CITIES TO VISIT' are printed in a smaller, red, sans-serif font. The man is also wearing a black wristband and a silver watch on his left wrist.

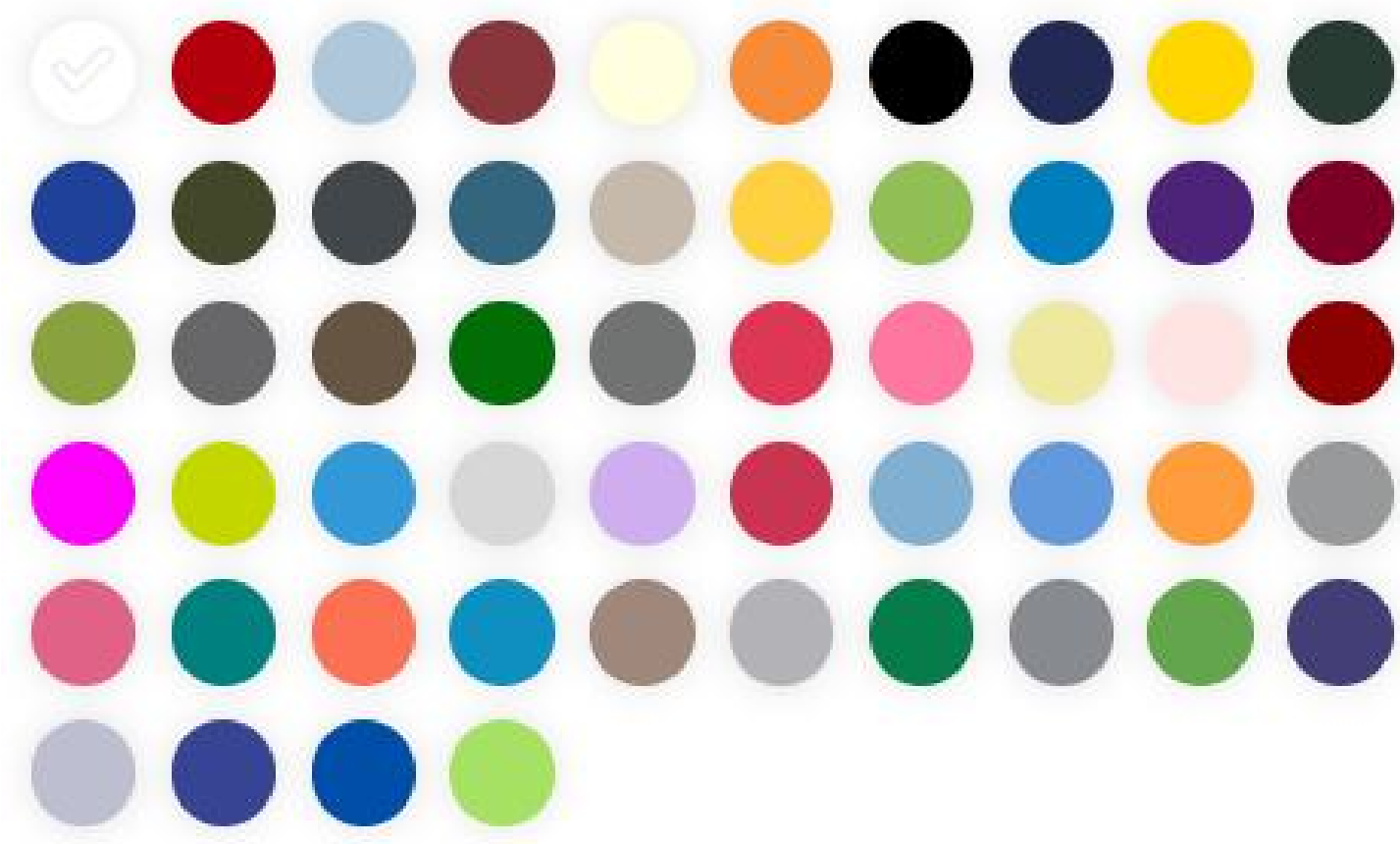
# Men's T-Shirts



**GILDAN®**

**Gildan G500**

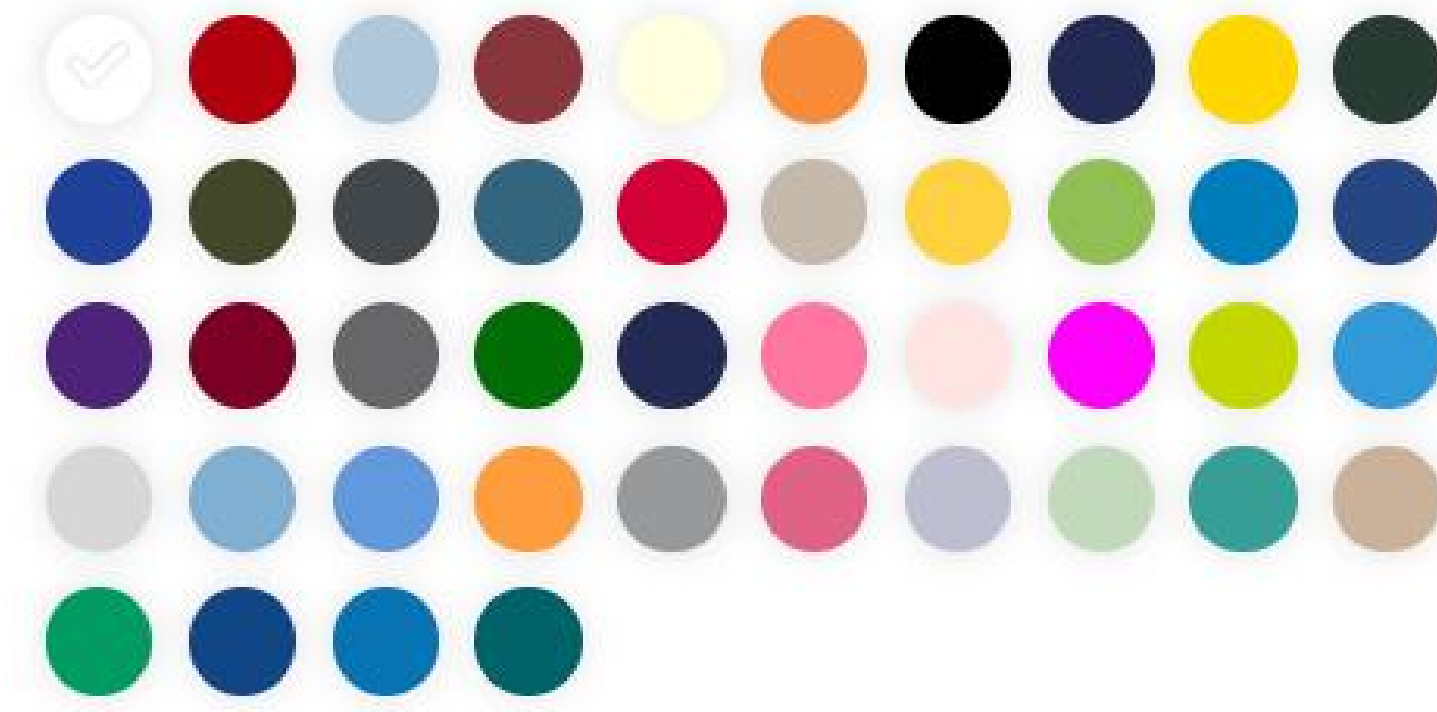
8.8 oz./lin. yd. | Adult Heavy Cotton™ T-Shirt



**GILDAN®**

**Gildan G200**

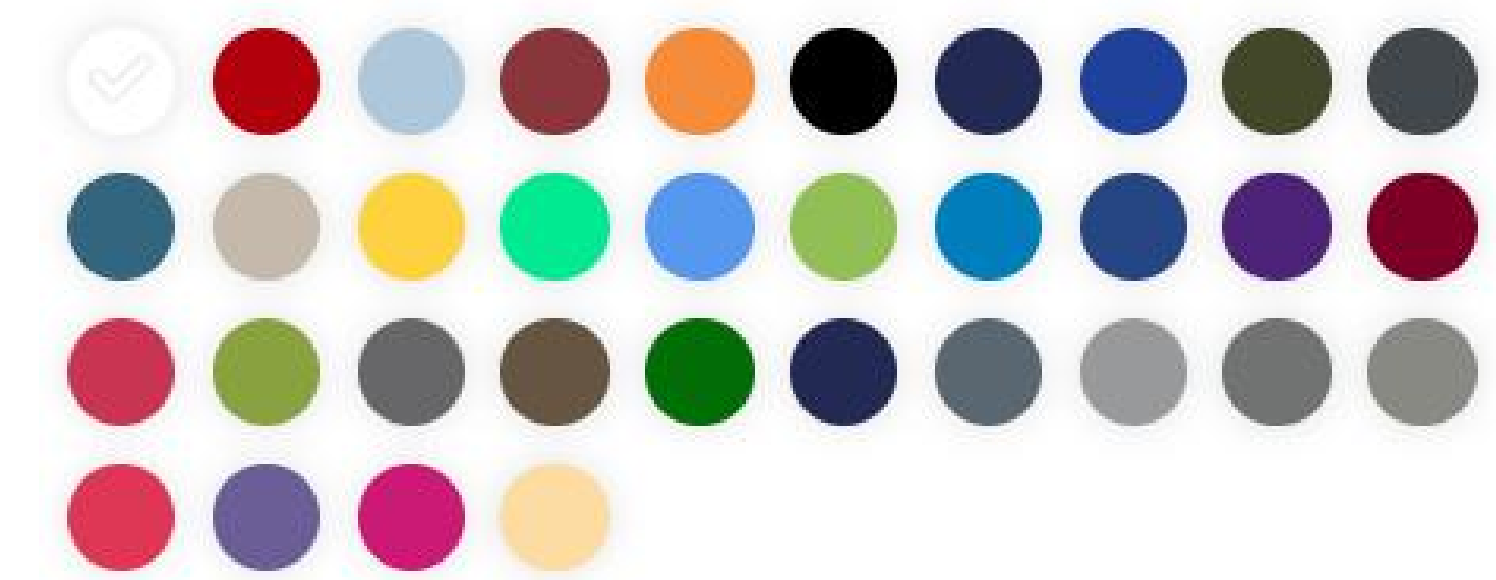
10 oz./lin. yd. | Adult Ultra Cotton® T-Shirt



**GILDAN®**

**Gildan G640**

7.5 oz./lin. yd. | Adult Softstyle® T-Shirt



**NL | NEXT LEVEL APPAREL**

**Next Level 6010**

7.2 oz./lin. yd. | Crew | Men's Triblend Crew



**American Apparel®**

**American Apparel 2001W**

7.2 oz./lin. yd. | Unisex Fine Jersey Short-Sleeve T-Shirt



**NL | NEXT LEVEL APPAREL**

**Next Level 3600**

7.2 oz./lin. yd. | Unisex Cotton T-Shirt





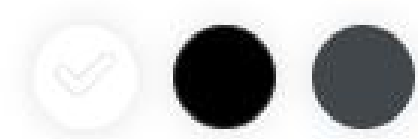
### Next Level 6200

5.8 oz./lin. yd. | Unisex Poly/Cotton Crew



### Next Level 6240

7.2 oz./lin. yd. | Men's CVC V



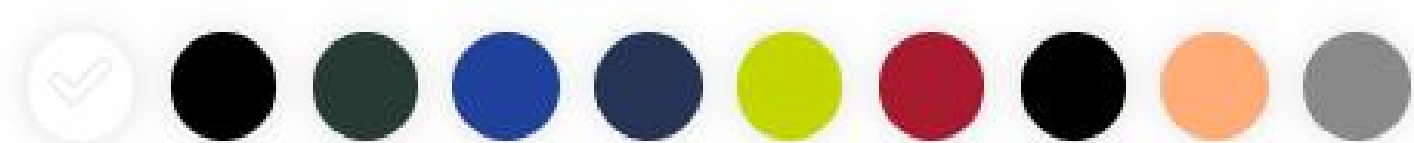
### Next Level 6440

7.2 oz./lin. yd. | Men's Sueded



### Jerzees 29M

9.3 oz. | Adult DRI-POWER® ACTIVE T-Shirt



### Gildan Hammer™ H000

10 oz./lin. yd. | Adult T-Shirt



### Champion T525C

Adult 6 oz. Short-Sleeve T-Shirt



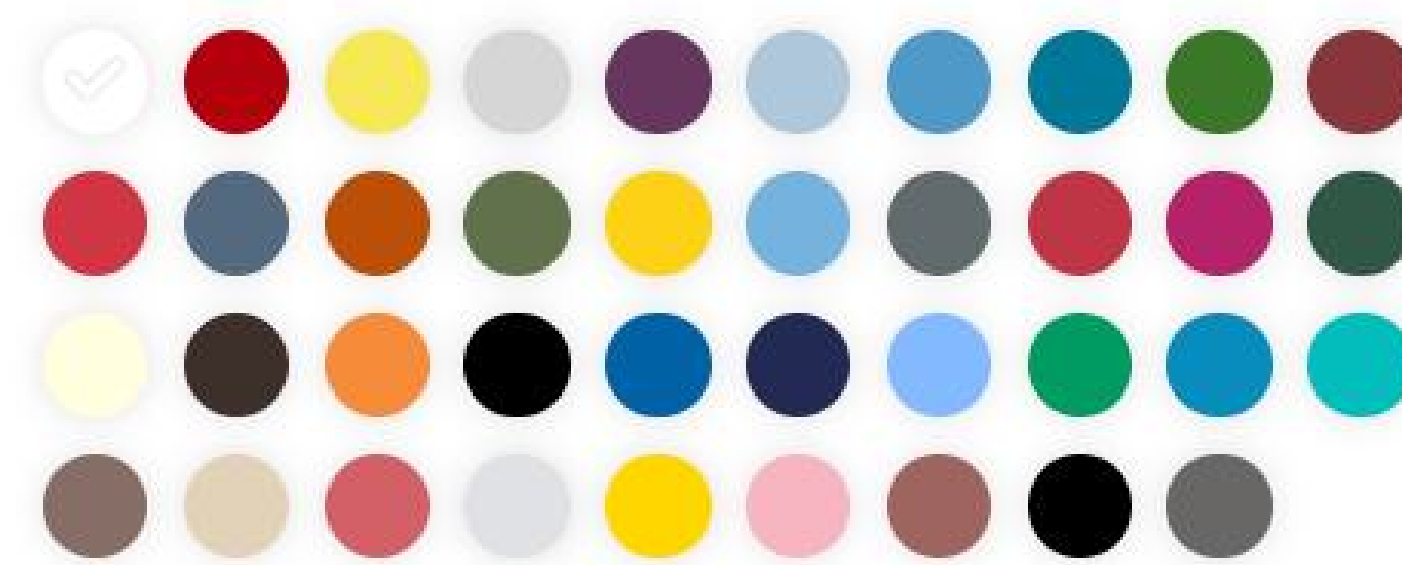


**Champion T2102**  
9.3 oz./lin. yd. | Heritage Jersey T-Shirt



BELLA+CANVAS  
LOS ANGELES

**Bella + Canvas 3001C**  
7 oz./lin. yd. | Unisex Jersey T-Shirt



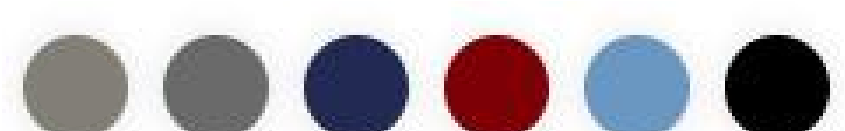
BELLA+CANVAS  
LOS ANGELES

**Bella + Canvas 3413C**  
5.7 oz./lin. yd. | Unisex Triblend T-Shirt



BELLA+CANVAS  
LOS ANGELES

**Bella + Canvas 3415C**  
5.7 oz./lin. yd | Unisex Triblend V-Neck T-Shirt



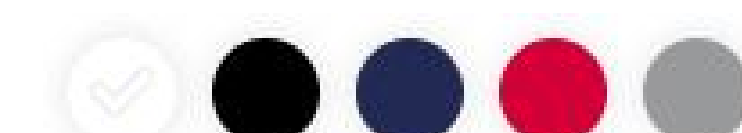
GILDAN®

**Gildan G200T**  
10 oz./lin.yd. | Adult Ultra Cotton® Tall T-Shirt



GILDAN®

**Gildan G64V**  
7.5 oz./lin.yd. | Adult Softstyle® V-Neck T-Shirt





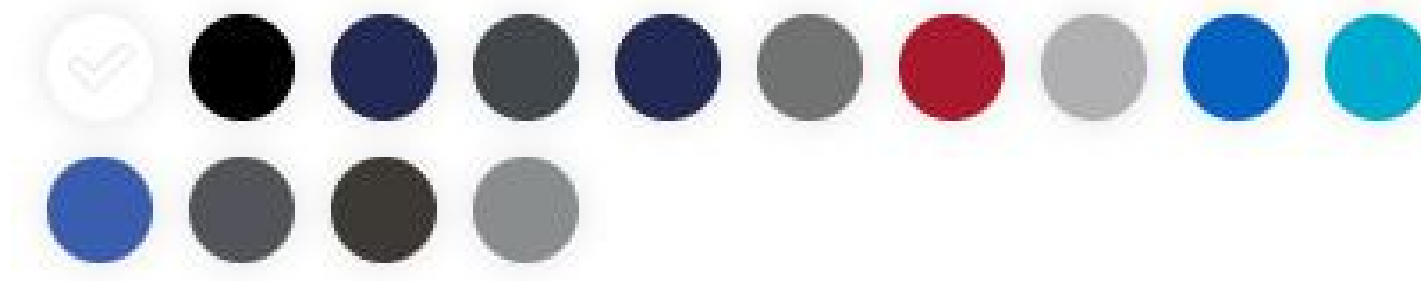
**NL** NEXT LEVEL  
APPAREL

**Next Level 3604**  
7.2 oz./lin. yd. | Unisex Ringer T-Shirt



**ANVIL**<sup>®</sup>  
BY GILDAN

**Anvil by Gildan 980**  
7.2 oz./lin.yd. | Softstyle<sup>®</sup> Lightweight T-Shirt



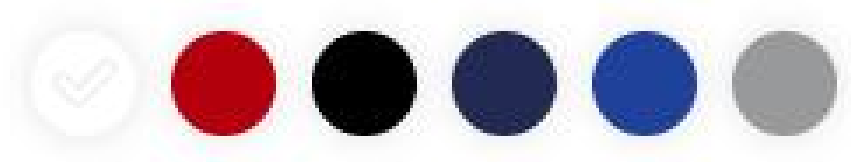


# Men's Tank Tops



**GILDAN**

**Gildan G220**  
10 oz./lin. yd. | Adult Ultra Cotton® Tank



**American Apparel**

**American Apparel 2408W**  
7.2 oz./lin. yd. | Unisex Fine Jersey Tank



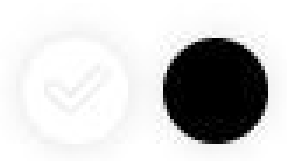
**BELLA+CANVAS**  
LOS ANGELES

**Bella + Canvas 3480**  
7.2 oz./lin. yd. | Unisex Jersey Tank



**BELLA+CANVAS**  
LOS ANGELES

**Bella + Canvas 3483**  
7.2 oz./lin. yd. | Unisex Jersey Muscle Tank





# Men's Long Sleeve Shirts



**GILDAN®**

**Gildan G540**

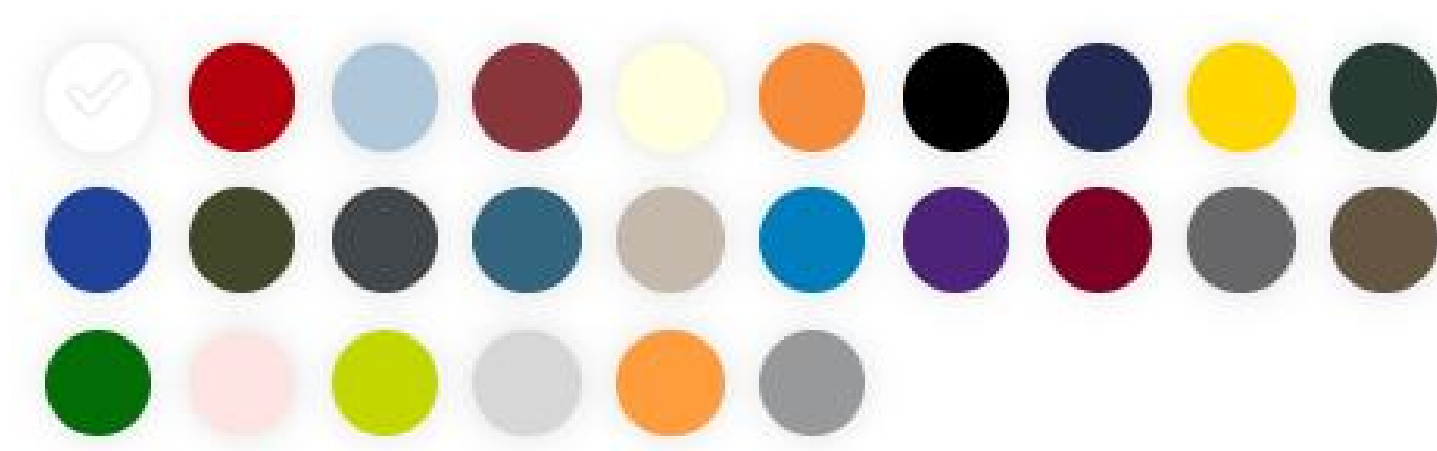
8.8 oz./lin. yd. | Heavy Cotton™ Long-Sleeve T-Shirt



**GILDAN®**

**Gildan G240**

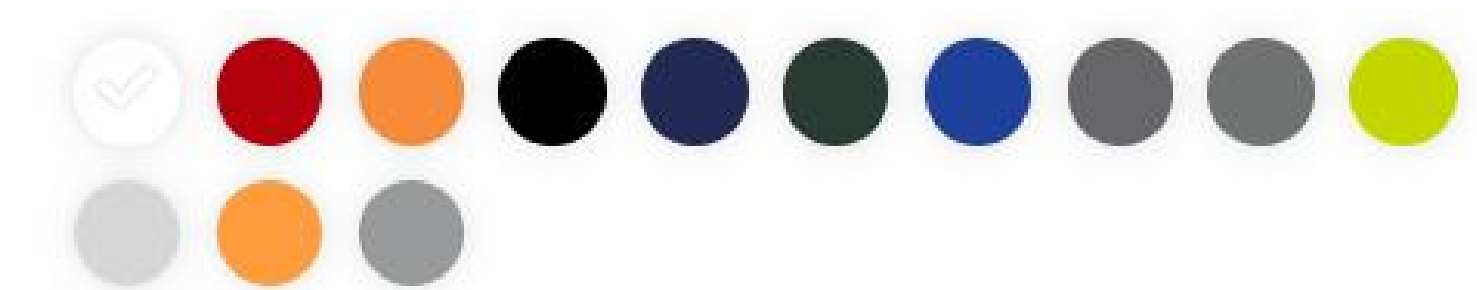
10 oz./lin. yd. | Ultra Cotton® Long-Sleeve T-Shirt



**GILDAN®**

**Gildan Adult G840**

9.2 oz./lin. yd. | Adult 50/50 Long-Sleeve T-Shirt



**NL** NEXT LEVEL  
APPAREL

**Next Level N3601**

7.2 oz./lin. yd. | Men's Cotton Long-Sleeve Crew



**BELLA+CANVAS**  
LOS ANGELES

**Bella + Canvas 3501**

7 oz./lin. yd. | Unisex Jersey Long-Sleeve T-Shirt





# Men's Sweatshirts



**GILDAN**

**Gildan G180**

13.3 oz./lin. yd. | Adult Heavy Blend™ 50/50 Fleece Crew



**BELLA+CANVAS**  
LOS ANGELES

**Bella + Canvas 3901**

13 oz./lin. yd. | Unisex Sponge Fleece Crewneck Sweatshirt



**Champion**

**Champion S600**

12 oz./lin. yd. | Double Dry Eco® Crew





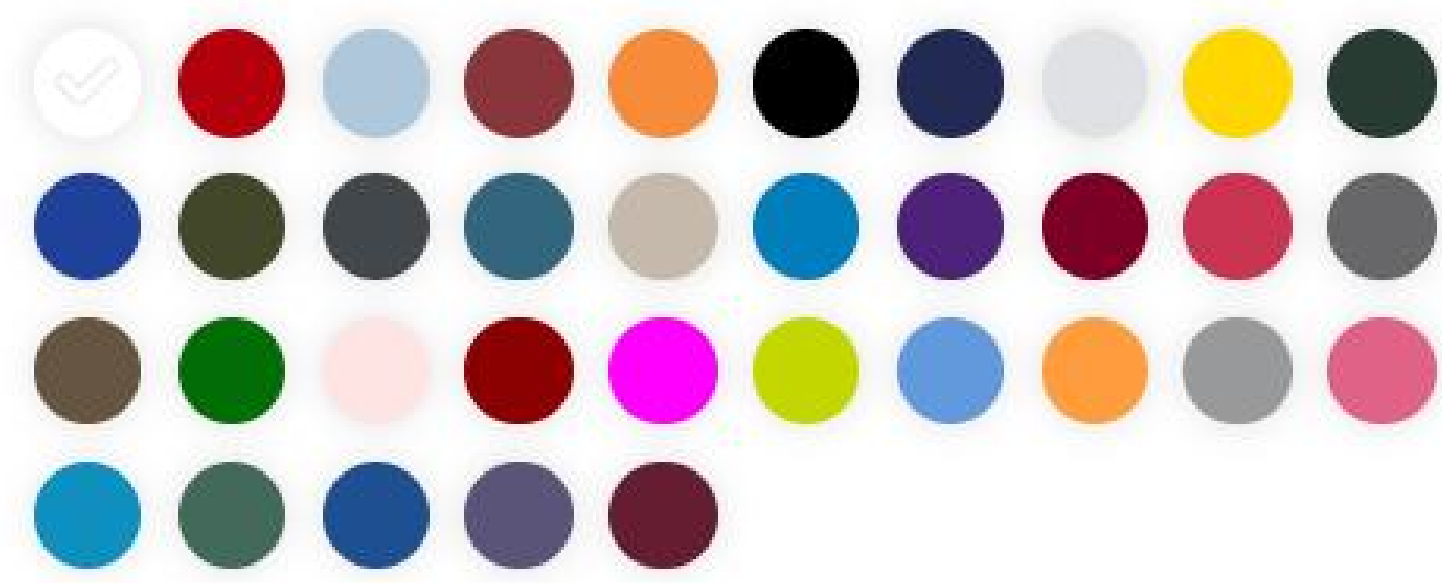
**Men's  
Hoodies**



**GILDAN**

**Gildan G185**

13.3 oz./lin. yd. | Adult Heavy Blend™ 50/50 Hood



**JERZEES**

**Jerzees Adult 996**

13.3 oz./lin. yd. | Adult NuBlend® Fleece Pullover Hooded Sweatshirt



**Champion**

**Champion S700**

12 oz./lin. yd. | Double Dry Eco® Pullover Hood



**BELLA+CANVAS**  
LOS ANGELES

**Bella + Canvas 3719**

13 oz./lin. yd. | Unisex Sponge Fleece Pullover Hoodie



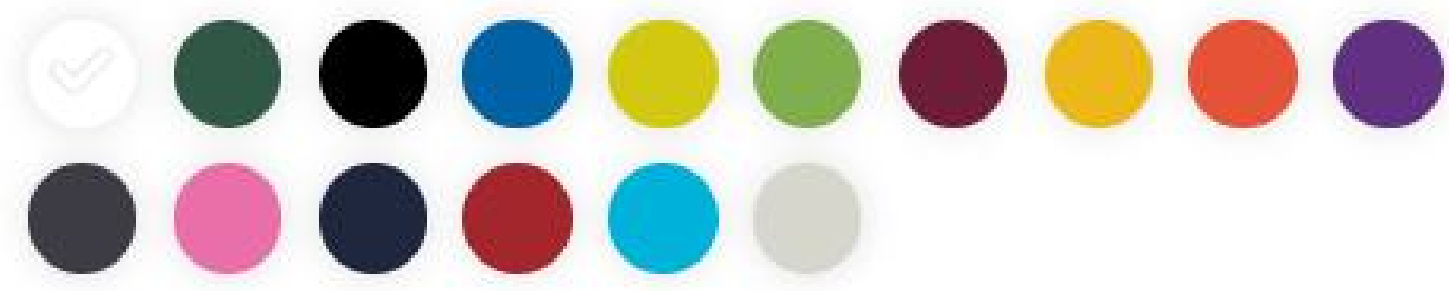


# Men's Embroidered Polos



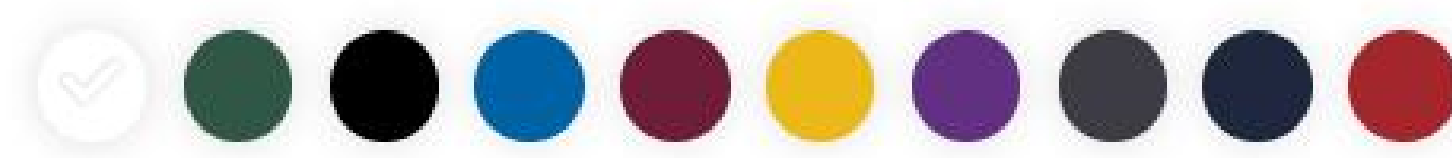
**Core 365 88181**

4.1 oz./lin. yd. | Men's Origin Performance Piqué Polo



**Core 365 88192**

4.1 oz./lin. yd. | Men's Pinnacle Performance Long-Sleeve Piqué Polo



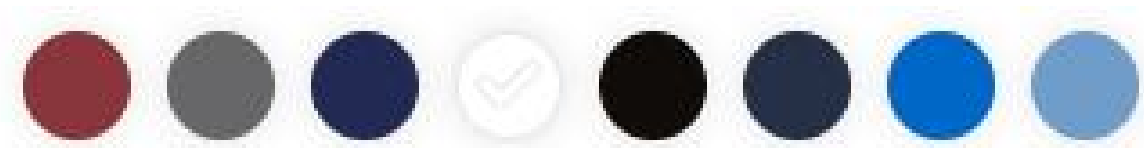
**M&O 7002**

11.3 oz. | Ring-Spun Piqué Polo



**M&O 7006**

11.3 oz. | Soft Touch Polo





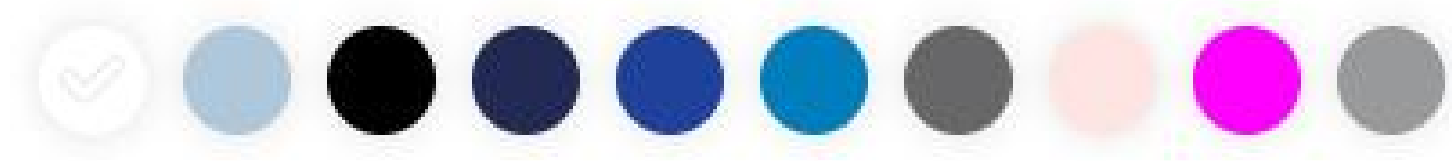
# Women's T-Shirts



**GILDAN®**

**Gildan G200L**

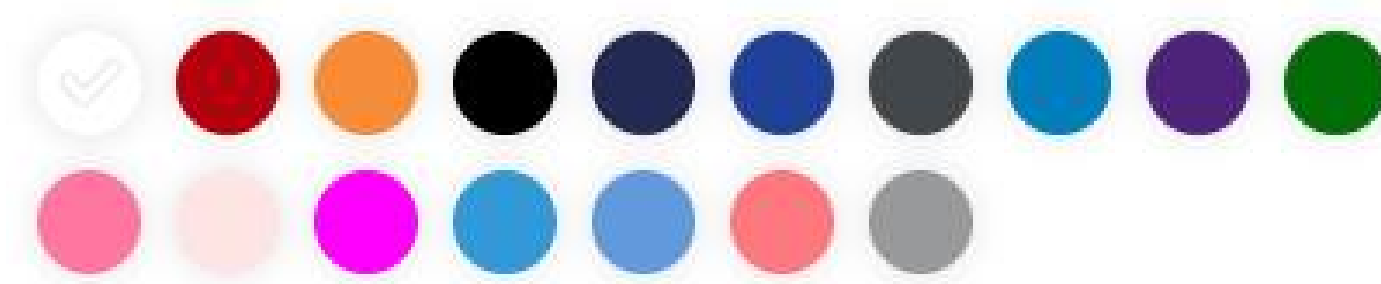
10 oz./lin. yd. | Ladies' Ultra Cotton® T-Shirt



**GILDAN®**

**Gildan G500L**

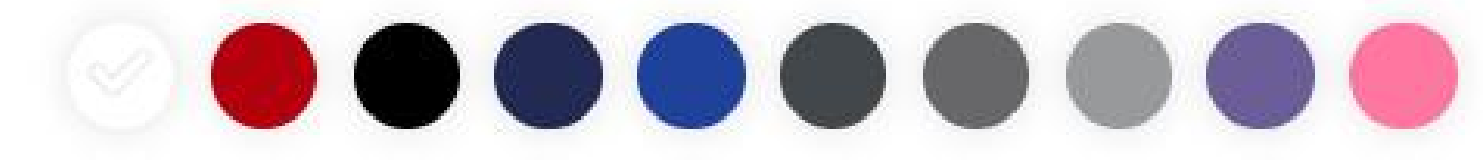
8.8 oz./lin. yd. | Ladies' Heavy Cotton™ T-Shirt



**GILDAN®**

**Gildan G640L**

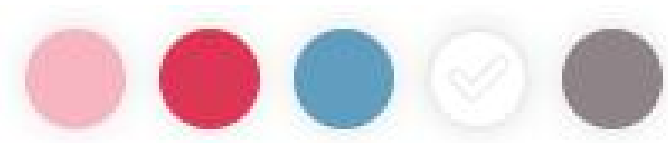
7.5 oz./lin. yd. | Ladies' Softstyle® Fitted T-Shirt



**BELLA+CANVAS.**  
LOS ANGELES

**Bella + Canvas 6004**

7 oz./lin. yd. | Ladies' The Favorite T-Shirt



**BELLA+CANVAS.**  
LOS ANGELES

**Bella + Canvas B8413**

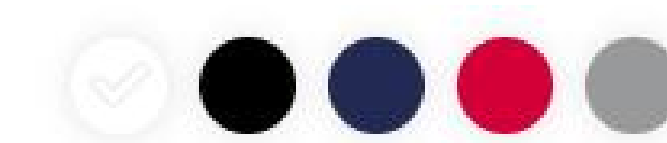
5.7 oz./lin. yd. | Ladies' Triblend Short-Sleeve T-Shirt



**GILDAN®**

**Gildan G64VL**

7.5 oz./lin. yd. | Ladies' SoftStyle® Fitted V-Neck T-Shirt





**Next Level N3900**

7.2 oz./lin. yd. | Ladies' Boyfriend T-Shirt



**Next Level 6710**

7.2 oz./lin. yd. | Ladies' Triblend Crew



**Bella + Canvas 6405**

7 oz./lin. yd. | Ladies' Relaxed Jersey V-Neck T-Shirt



**Gildan 5V00L**

5.3 oz./lin. yd. | Heavy Cotton™ Women's V-Neck T-Shirt



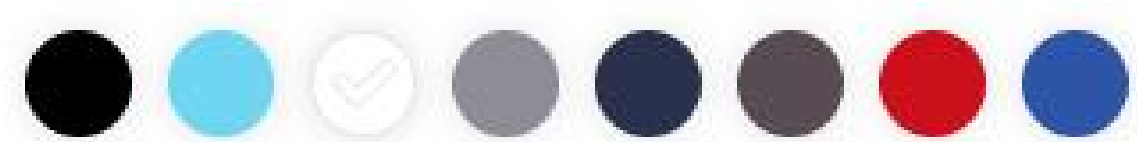
A woman with long brown hair is shown from the chest up, wearing a white tank top. The tank top features a large, artistic graphic print of a woman with long, flowing purple hair and a patterned skirt. The woman in the background is wearing a necklace with a small pendant and a watch on her left wrist. The background is a bright, outdoor setting with a body of water and some driftwood.

# Women's Tank Tops



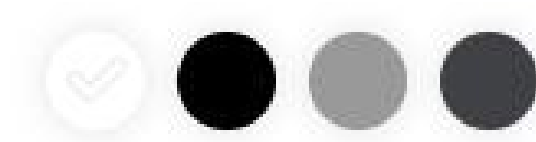
**NL** | NEXT LEVEL  
APPAREL

**Next Level 6733**  
7.2 oz./lin. yd. | Ladies' Triblend  
Racerback Tank



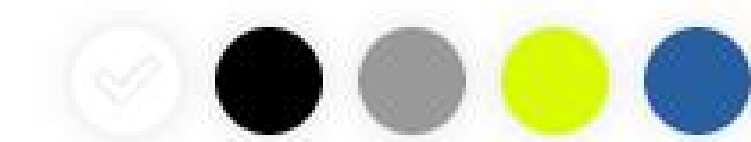
**BELLA+CANVAS.**  
LOS ANGELES

**Bella + Canvas B6003**  
7.2 oz./lin. yd. | Ladies' Jersey  
Muscle Tank



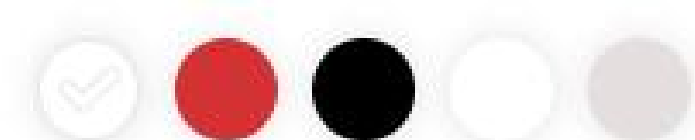
**BELLA+CANVAS.**  
LOS ANGELES

**Bella + Canvas B8800**  
6.2 oz./lin. yd. | Ladies' Flowy Racerback Tank



**BELLA+CANVAS.**  
LOS ANGELES

**Bella + Canvas 8430**  
5.7 oz./lin. yd. | Ladies' Triblend  
Racerback Tank





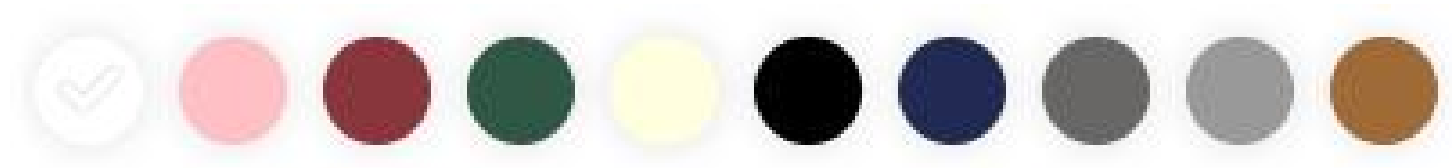
# Women's Long Sleeve Shirts



**BELLA+CANVAS**  
LOS ANGELES

**Bella + Canvas 3511**

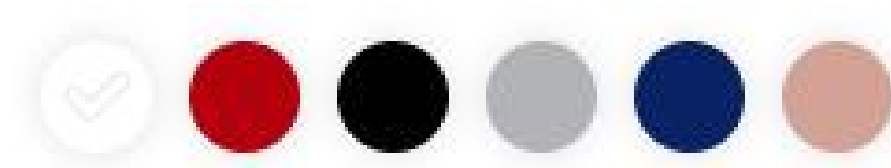
6 oz./lin. yd. | Unisex 6oz  
Heavyweight Long-Sleeve T-Shirt



**NL** | **NEXT LEVEL**  
APPAREL

**Next Level 3911NL**

4.3 oz./lin. yd. | Ladies' Relaxed Long  
Sleeve T-Shirt



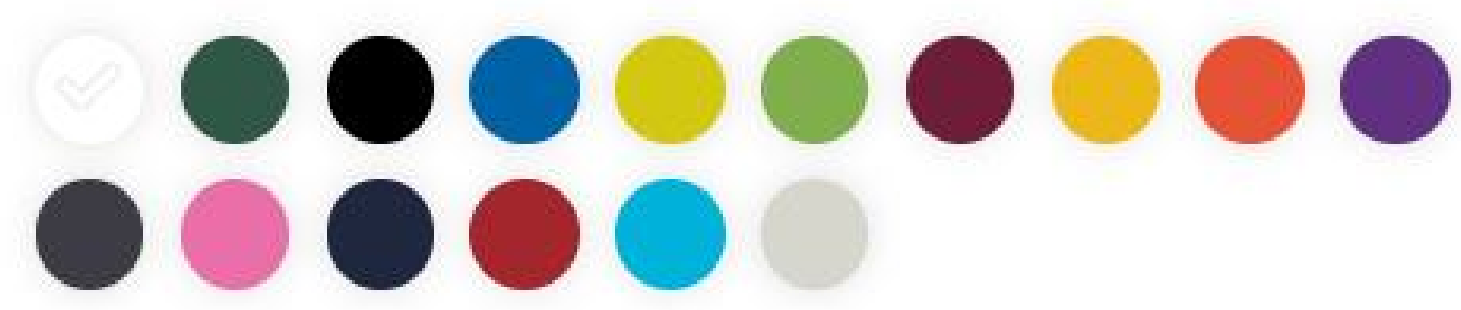


# Women's Embroidered Polos



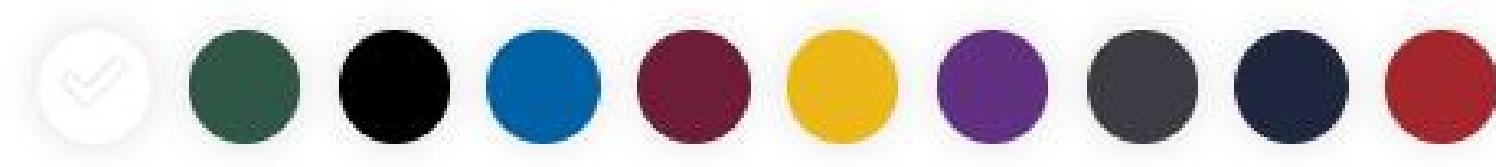
**Core 365 78181**

4.1 oz./lin. yd. | Ladies' Origin Performance Piqué Polo



**Core 365 78192**

4.1 oz./lin. yd. | Ladies' Pinnacle Performance Long-Sleeve Piqué Polo





# Kids & Youth Clothing





**GILDAN®**

**Gildan G500B**

8.8 oz./lin. yd. | Youth Heavy Cotton™ T-Shirt



**GILDAN®**

**Gildan G200B**

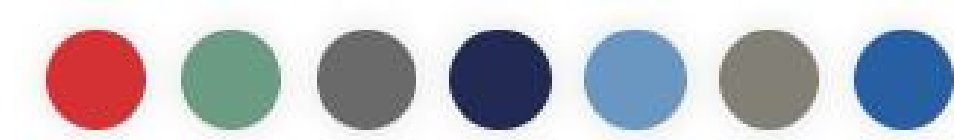
10 oz./lin. yd. | Youth Ultra Cotton® T-Shirt



**BELLA+CANVAS.**  
LOS ANGELES

**Bella + Canvas 3413Y**

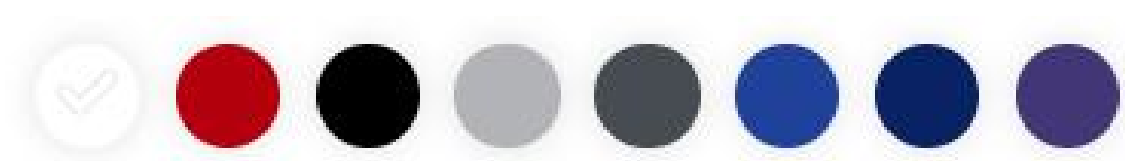
5.7 oz./lin. yd. | Youth Triblend Short-Sleeve T-Shirt



**NL | NEXT LEVEL**  
APPAREL.

**Next Level 3310**

7.2 oz./lin yd. | Youth Boys' Cotton Crew



**NL | NEXT LEVEL**  
APPAREL.

**Next Level N6310**

7.2 oz./lin. yd. | Youth Triblend Crew



**BELLA+CANVAS.**  
LOS ANGELES

**Bella + Canvas 3001Y**

7 oz./lin. yd. | Youth Jersey T-Shirt





**GILDAN®**

**Gildan G180B**

13.3 oz./lin. yd. | Youth Heavy Blend™ 50/50 Fleece Crew



**GILDAN®**

**Gildan G185B**

13.3 oz./lin. yd. | Youth Heavy Blend™ 50/50 Hood



A woman with long brown hair is wearing a white baseball cap with a colorful embroidered logo on the front. The logo depicts a mountain range with a sunset or sunrise behind it, and a body of water at the base. She is standing in front of a chain-link fence. The background shows a building and some greenery. The text "Embroidered Headwear" is overlaid on the image in a large, bold, black font.

# Embroidered Headwear



THE AUTHENTIC T-SHIRT COMPANY®

**ATC™ C130**  
Everyday Cotton Twill Cap



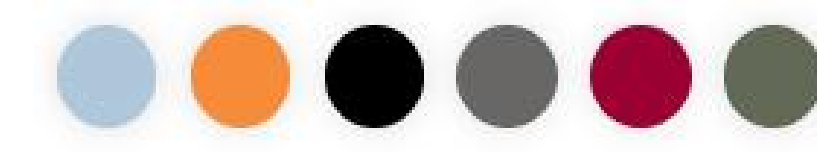
**YUPOONG**

**Yupoong 6606**  
Adult Retro Trucker Cap



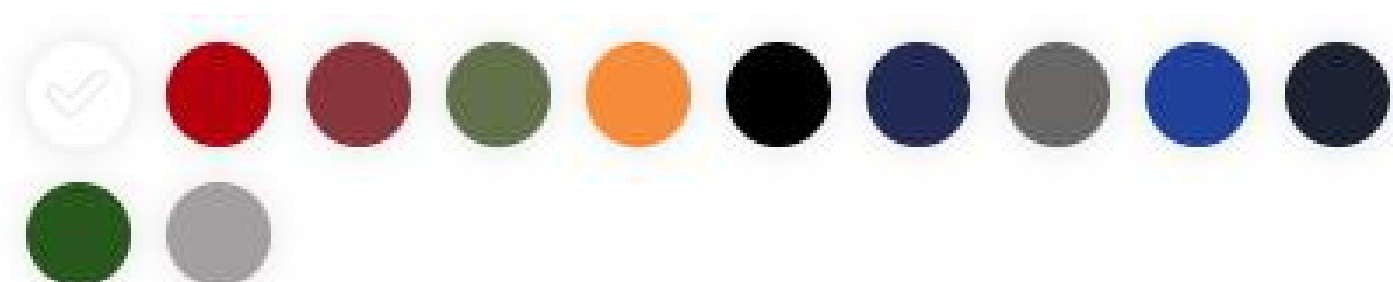
**YUPOONG**

**Yupoong 6245CM**  
Adult Low-Profile Cotton Twill Dad Cap



**FLEXFIT®**

**Flexfit 6277**  
Adult Wooly 6-Panel Cap



**YUPOONG**

**Yupoong 6089**  
Adult 6-Panel Structured Flat Visor Classic Snapback



**YUPOONG**

**Yupoong 6006**  
Adult 5-Panel Classic Trucker Cap

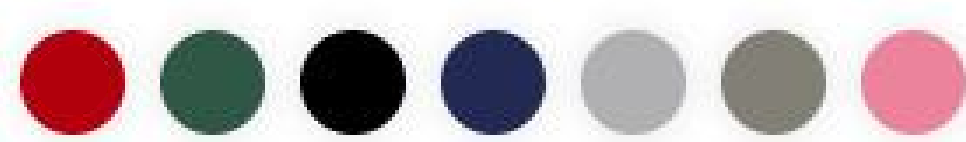




**Sportsman SP15**  
12" Custom Beanie with Pom Pom



**Sportsman SP08**  
8" Custom Beanie



**Sportsman SP12**  
12" Custom Beanie with Cuff

